

GARDEN & PRODUCE

At Lancaster Ag we count it a wonderful privilege to work with all the gardeners and produce growers who use our programs and products. The number one reason we focus on gardening is to improve human health. It is of great concern to us that from 1940 to 1991 the produce quality in the United States dropped. On the average fruit lost 60% of its mineral density and vegetables lost nearly 80%.

The largest sphere of influence with which to raise the quality of our current produce is the soil. The condition of our soil is important because all life on earth is dependent on soil. We have specifically developed our Lancaster Ag produce programs to improve the soil in your gardens and acres of produce. We know that healthy soil is teeming with life and activity and is rich in organic matter, insects, earthworms, water, and nutrients that are readily available. Our goal is to supplement the soils with minerals, renewing our capability of growing nutrient-dense vegetables and fruit.



Healthy families are a blessing. Recognizing that the challenges of obesity, diabetes, cancer, heart disease, and various emotional and mental disorders are connected to food in some way, we recommend returning to a healthy lifestyle through the foods we eat. Growing our own salad greens, root vegetables, green vegetables, and fruits in nutrient-dense soils is a wonderful start. Other suggestions are buying fresh and local, eating lots of color instead of white foods, eating raw vegetables and fruits, and preparing vegetables by steaming or lightly cooking to preserve their nutritional value.

Lancaster Ag acknowledges that God has entrusted us with caring for His earth. Thus, we invite you to study the descriptions of our garden products and the steps to our programs. The pages in this section are a wonderful resource for you to reference often.



Fall Dry Blends

Fall is an important time to improve the soil in gardens and produce acres. Lancaster Ag offers three Fall Dry Blends that are formulated for three different general conditions of the soil. They will put nutrients back into the soil and prepare it for next year's crops. These blends are specially designed to improve the nutrient balance and content in the soil and are formulated with ingredients that are friendly to soil's microorganisms.

Soil samples: The soil samples from gardens and produce acres that are sent to Lancaster Ag are evaluated for the major and minor minerals. Based on the results of these soil samples, Lancaster Ag is able to give specific recommendations for which Fall Dry Blend to use and its application rate. If needed, we can make custom mixes tailored to specific soil samples.

Application: Adding Fall Dry Blends in the months from August to December allows the soil to make improvements over the winter and begin the process of making nutrients available for the following spring and summer. It is best to apply them before the ground freezes, however, the full rate can be applied up to four weeks before planting. Closer to planting, we recommend using lower application rates. If the soil is to be plowed, apply the Fall Dry Blend on the surface after plowing.

By offering these Fall Dry Blends, we help customers attain the goal of balanced soil that is biologically alive. When there is a high, balanced nutrient reserve in the soil, the result will be plants that are disease and insect resistant and fruits and vegetables that are high quality, nutrient-dense food.

Fall Blend C 0-1-0-26-1.5-1.5 CFU

Ingredients: ground limestone, humus, marl, gypsum, soft rock phosphate with colloidal clay, salt, calcium borate, copper sulfate, zinc sulfate, humates

- A dry blend formulated to improve the **calcium** level in the soil
- Can be used on gardens, flower beds, lawns, small fruits, and fruit trees
- Helps the fertility level and balance of the soil for next growing season
- For autumn application between August & December
- Apply 50-75 pounds per 1000 square feet

Stock#05-1005-050 50 Pounds..... \$9.35

Fall Blend M 0-1.5-3-26-2-2.7 CFU

Ingredients: ground limestone, marl, sulfate of potash-magnesia, humus, soft phosphate with colloidal clay, gypsum, brown phosphate rock, calcium borate, copper sulfate, zinc sulfate, humates

- A dry blend formulated to improve the **magnesium** level of the soil
- Can be used on gardens, flower beds, lawns, small fruits, and fruit trees
- Helps the fertility level and balance of the soil for next growing season
- Apply July 15-September 15 for maximum benefit
- Apply 50-75 pounds per 1000 square feet

Stock#05-1006-050 50 Pounds..... \$11.40

Fall Blend P 0-5-0-24-1.5-1.5 CFU

Ingredients: ground limestone, soft phosphate with colloidal clay, brown phosphate rock, humus, gypsum, marl, salt, calcium borate, copper sulfate, zinc sulfate, humates

- A dry blend formulated to improve the **phosphorus** level of the soil
- Helps the fertility level and balance of the soil for next growing season
- For autumn application between August & December
- Apply 50-75 pounds per 1000 square feet

Stock#05-1007-050 50 Pounds..... \$12.09



Garden & Produce Products

Garden & Produce

Lancaster Ag prefers to make recommendations based on a soil test and will design a complete soil nutrient program for individuals.

**Certified organic growers should check with certifiers for approval prior to use.

Aragonite Dry 33% CFU

Ingredient: marl

- Shell flour, comes from the ocean
- Highly-available source of calcium and trace minerals
- See Lancaster Ag for specific fertility guidance
- Application recommendations are based on soil tests

Stock#05-1000-050 50 Pounds..... \$13.16

Asparagus Mix 1-2-1-7-0-0.5 CFU

Ingredients: humus, ground limestone, soft rock phosphate with colloidal clay, sulfate of potash-magnesia, sodium nitrate, calcium borate

- A blend that helps to meet the nutrient needs of asparagus
- Can enhance quality and yield in the next year of production
- Provides a boost to the roots by replenishing nutrients
- Apply 75 pounds per 100 feet of row after last harvest (best results by August 31), providing sufficient soil moisture during August & September

Stock#05-1001-050 50 Pounds..... \$12.50

Blossom Set

Ingredients: molasses, apple cider vinegar, ammonia, phosphoric acid, manganese sulfate, seaweed, defoamer, salt

- A foliar plant food
- Used when fruit and vegetable growth is longer than desired
- Apply once per week for 2-3 weeks
- Small areas – apply 4 ounces to 0.5 gallon water per 1000 square feet
- Large areas - apply 1.5 gallons to 25 gallon water per acre

Stock#05-2003-032 1 Quart \$4.02

Stock#05-2003-001 1 Gallon..... \$7.90

Blueberry Mix 0-3-2-10-0-30 CFU

Ingredients: sulfur, ground limestone, soft rock phosphate with colloidal clay, gypsum, potassium sulfate, iron sulfate, marl, humus, fish meal, organic dried kelp, zinc sulfate, calcium borate, copper sulfate, manganese sulfate, humates

- A blend that helps to provide the nutrients that blueberries need
- Apply in the fall, shortly after harvest
- Apply 2-5 pounds per bush depending on size
- Spread throughout the bed, avoiding high concentration at the base of plants

Stock#05-1002-050 50 Pounds..... \$26.50

Clean & Feed 1-4-5-17-1-4

Ingredients: ground limestone, soft phosphate with colloidal clay, marl, sodium nitrate, gypsum, sulfate of potash-magnesia, humus, potassium sulfate, organic kelp, calcium borate, copper sulfate, bone meal, fish meal, zinc sulfate, kelp meal, corn gluten meal

- Helps to suppress weed germination in gardens and lawns
- Gardens - use after seeds have sprouted to 1" or transplants are planted
- Lightly till the soil to kill weed seeds
- Apply 30 pounds per 1000 square feet with spreader method of choice
- Use with spring and fall crops
- Lawns – at spring green-up broadcast 30 pounds per 1000 square feet
- Repeat halfway through the growing season

Stock#05-1003-050 50 Pounds..... \$21.56

Dagger CFU

Ingredients: 72.5% fish oil, 20% neem oil, 5% lecithin, 2.5% cottonseed oil

- Unique blend of spray oils
- May control a wide variety of insects and mites (aphids, citrus rust mites, spider mites, leaf miner, leaf roller, mealy bugs, psyllids, thrips)
- May control eggs, larvae, and nymphs of insects
- May also control certain fungal diseases (powdery mildew, greasy spot on citrus, and black spot)
- Enhances the color and visual appearance of plants
- Shake vigorously 30 seconds before pouring
- Apply 2 quarts to 20 gallon water per acre
- Use pressure or fine-mist sprayer to ensure coverage of plant and leaf surfaces

Stock#05-2004-032 1 Quart \$12.53

Stock#05-2004-001 1 Gallon..... \$43.85

Stock#05-2004-212 2.5 Gallons \$105.00

d-Compose CFU

Ingredients: humic acid, fulvic acid, sea minerals, microbiological soil stimulant

- Contains biology made up of bacteria, enzymes, and amino acids
- A blend that can aid in the breakdown of plant debris from this year's plants
- Designed to enhance the biological life of the soil
- Helps the soil rejuvenate itself over winter
- Apply 1 quart to 1 gallon water per 1000 square feet
- Apply evenly to soil surface and plant debris
- Following application, lightly till into the soil

Stock#05-2001-001	1 Gallon.....	\$6.69
Stock#05-2001-212	2.5 Gallons.....	\$13.80

Diatomaceous Earth (DE) CFU

Ingredient: microscopic fossils of diatoms (a type of green algae that produces a shell)

- This fossilized diatom flour is abrasive and absorptive
- Razor sharp at the microscopic level
- Physically wears through insect's waxy outer cuticle
- Absorbs insect's body fluids till it dies from dehydration
- Insects cannot develop immunity
- Stainless, odorless and permanent
- Apply to soil and plants
- May control various species of larvae when added to animal feeds
- Apply to foliage in early morning while there is dew
- Also apply as dusting powder or insect repellent

Stock#09-2738-005	5 Pounds.....	\$5.00
Stock#09-2738-050	50 Pounds.....	\$20.95

Dipel CFU

Ingredient: Bacillus thuringiensis

- Natural repellent used to control worms in vegetables, fruits, field crops, flowers, ornamentals, and lawns
- Controls gypsy moth, tent caterpillar, cabbage looper, tomato hornworm, leafroller
- Biodegrades quickly
- Apply 1 pound per 3,500 square feet and completely cover both sides of foliage
- Use higher rates against heavier infestations
- Retreatment at 7-10 day intervals may be necessary

Stock#05-1004-001	1 Pound.....	\$19.00
-------------------	--------------	---------

Entrust CFU

Ingredients: spinosad (a mixture of spinosyn A and spinosyn D)

- Organic insecticide
- Used to control Colorado Potato Beetles and worm pests

Stock#12-3004-001	1/4 lb Packet.....	\$154.13
-------------------	--------------------	----------

F-1 CFU

Ingredients: humus, liquid seaweed, sea minerals, photosynthetic microbes, hypercellulase, symbiont microbes, humic nutrients, beneficial cultures

- A foliar product to aid in disease control in fruits and vegetables
- Contains biology made up of bacteria, enzymes, and amino acids
- Small areas - foliar apply 1 pint to 2.5 gallon water per 1000 square feet every 7-10 days
- Large areas - foliar apply 4 gallons to 16 gallon water per acre every week
- Apply thoroughly to entire plant as a light mist in early morning or late evening

Stock#05-2005-001	1 Gallon.....	\$6.80
Stock#05-2005-212	2.5 Gallons.....	\$15.42
Stock#05-2005-015	15 Gallons.....	\$92.52

Fall Blend C 0-1-0-26-1.5-1.5 CFU

Ingredients: ground limestone, humus, marl, gypsum, soft rock phosphate with colloidal clay, salt, calcium borate, copper sulfate, zinc sulfate, humates

- A dry blend formulated to improve the calcium level in the soil
- Can be used on gardens, flower beds, lawns, small fruits, and fruit trees
- Helps the fertility level and balance of the soil for next growing season
- For autumn application between August and December
- Apply 50-75 pounds per 1000 square feet

Stock#05-1005-050	50 Pounds.....	\$9.35
-------------------	----------------	--------

Fall Blend M 0-1.5-3-26-2-2.7 CFU

Ingredients: ground limestone, marl, sulfate of potash-magnesia, humus, soft phosphate with colloidal clay, gypsum, brown phosphate rock, calcium borate, copper sulfate, zinc sulfate, humates

- A dry blend formulated to improve the magnesium level of the soil
- Can be used on gardens, flower beds, lawns, small fruits, and fruit trees
- Helps the fertility level and balance of the soil for next growing season
- Apply July 15-September 15 for maximum benefit
- Apply 50-75 pounds per 1000 square feet

Stock#05-1006-050	50 Pounds.....	\$11.40
-------------------	----------------	---------



Fall Blend P 0-5-0-24-1.5-1.5 CFU

Ingredients: ground limestone, soft phosphate with colloidal clay, brown phosphate rock, humus, gypsum, marl, salt, calcium borate, copper sulfate, zinc sulfate, humates

- A dry blend formulated to improve the phosphorus level of the soil
- Helps the fertility level and balance of the soil for next growing season
- For autumn application between August and December
- Apply 50-75 pounds per 1000 square feet

Stock#05-1007-050 50 Pounds..... \$12.09

Fine Limestone (Hi Cal, Pulverized) CFU

Ingredient: ground calcium carbonate

- Major source to improve the level of calcium in the soil
- The finer the grind, the faster the calcium is available to the plants
- Application rates vary from 100 pounds to 3 tons per acre

Stock#04-1005-050 50 Pounds..... \$6.25

Force

Ingredients: calcium nitrate, ammonia thio-sulfate, phos acid, phosphorus stabilized fish, molasses, humus, potassium sulfate, humic acid, fulvic acid, calcium carbonate, sea minerals, liquid seaweed, sodium nitrate, microbiological soil stimulant, manganese sulfate, copper sulfate, calcium borate, salt, zinc sulfate, photosynthetic microbes, hypercellulase, symbiont microbes, humic nutrients, beneficial cultures, elemental sulfur, Vitamin C, Vitamin E, Vitamin B1, Vitamin B12

- Designed for soil drench applications for fruits and vegetables
- Can boost immunization systems of plants
- Invigorates crops by mineralizing and fertilizing
- Mix thoroughly before applying
- Small areas – apply 1/2 pint per 100 foot of row
- Large areas – apply 30 gallons to 30 gallon water per acre
- Drip line – 4 ounces per week

Stock#05-2300-001 1 Gallon..... \$8.18

Stock#05-2300-212 2.5 Gallons..... \$17.95

Stock#05-2300-015 15 Gallons..... \$97.95



Fruit Mix

Ingredients: calcium nitrate, phos-acid, potassium nitrate, potassium phosphate, dextrose, humic acid, seaweed, copper sulfate, zinc sulfate, calcium borate, manganese sulfate, Vitamin A, Vitamin E, Vitamin C, Vitamin B12

- All-around garden and produce foliar fertilizer
- A unique blend of NPK with calcium
- Penetrates the leaf surface and helps carry other nutrients into the plant
- Use can reduce the number of foliar applications
- Foliar apply every 7-14 days when there is sufficient foliage
- Continue throughout the growing season
- Shake well before use
- Apply as a light mist in early morning or late evening
- Small areas – apply 1.5 ounces to 1 gallon water per 1000 square feet
- Large areas – apply 2 quarts to 20 gallon water per acre

Stock#05-2007-016 1 Pint..... \$4.75

Stock#05-2007-032 1 Quart..... \$9.25

Stock#05-2007-001 1 Gallon..... \$19.42

Stock#05-2007-212 2.5 Gallons..... \$46.80

Stock#05-2007-015 15 Gallons..... \$279.00

Garden Top Dress 2-4-4-15-1.5-4 Green - CFU

Ingredients: ground limestone, soft phosphate with colloidal clay, gypsum, sodium nitrate, humus, marl, sulfate of potash-magnesia, sulfate of potash, organic kelp, calcium borate, kelp meal, bone meal, copper sulfate, zinc sulfate, fish meal

- A starter fertilizer with readily available nitrogen
- Can provide fast germination
- Multiple sources of nitrogen for proper cell development
- Wide array of nutrients to feed the soil for this year's crop
- Helps to improve the energy level of disturbed soil
- In rainy seasons, use every two weeks to improve energy level of the soil
- Use along with SeedGro to maintain good growing produce
- Small areas – broadcast apply 25 pounds per 1000 square feet before planting
- Large areas – broadcast apply 750 pounds per acre before planting
- On-row application: apply 10 pounds per 200 feet of row on the soil after seeds are planted

Stock#05-1010-050 50 Pounds..... \$16.74

Garden Top Dress 2-6-4-15-1.5-4 Biological

Ingredients: soft phosphate with colloidal clay, ground limestone, gypsum, ammonium sulfate, humus, sulfate of potash-magnesia, marl, mono ammonium phosphate, potassium sulfate, kelp, calcium borate, fish meal, bone meal, copper sulfate, zinc sulfate, kelp meal

- A starter fertilizer with readily available nitrogen
- Can provide fast germination
- Multiple sources of nitrogen for proper cell development
- Wide array of nutrients to feed the soil for this year's crop
- Helps to improve the energy level of disturbed soil
- In rainy seasons, use every two weeks to improve energy level of the soil
- Use along with SeedGro to maintain good growing produce
- Small areas – broadcast apply 25 pounds per 1000 square feet before planting
- Large areas – broadcast apply 750 pounds per acre before planting
- On-row application: apply 10 pounds per 200 feet of row on the soil after seeds are planted

Stock#05-1009-050 50 Pounds..... \$15.70

Gypsum CFU

Ingredient: calcium sulfate

- High availability of calcium
- Application recommendations are based on soil tests

Stock#04-1039-050 50 Pounds..... \$9.52

Lime Sulfur CFU

Ingredients: 30% calcium polysulfide

- For use as a dormant spray and in growing season
- Controls insects such as scale, mites, and borers
- Can prevent numerous fungal diseases such as peach leaf curl, maple gall, leaf blotch, powdery mildew, anthracnose, rust and black spot
- Use on fruit and shade trees, shrubs, roses, and berries
- Spray to cover foliage till wet
- For brambles- apply at 1/2" leaf bud stage
- For dormant spray, use 1 pint to 3 gallon water

Stock#12-1029-005 5 Gallonsask



MAP (Monoammonium Phosphate) 11-52-0

- Used to improve the phosphorus levels in the soil
- Use when growth is slow even after SeedGro and Garden Top Dress have been applied
- Can be used later in the season to boost energy and improve yields in low CEC soils
- If soil is dry, water the area before application
- Apply 10 pounds per 200 square feet of row

Stock#04-2010-050 50 Pounds..... \$19.95

Neem Oil CFU

Ingredient: neem oil

- Product of the neem tree, an evergreen native to tropical regions
- Bio-pesticide – mealy bugs, beet armyworms, aphids, cabbage worms, nematodes, Japanese beetles
- Household pesticide – ants, bedbugs, cockroaches, houseflies, sand flies, snails, termites, mosquitoes
- Fungal control – black spot, powdery mildew, anthracnose, rust
- The dilution rate is 2.0-2.5%
- Small areas – 1.25 ounces Neem Oil and 3 ounces Phyto-guard to 1 gallon water
- Large areas – 50 ounces Neem Oil and 1 gallon Phyto-guard to 39 gallon water

Stock#05-2009-016 1 Pint..... \$13.99

Stock#05-2009-032 1 Quart \$23.75

Stock#05-2009-001 1 Gallon..... \$82.36

Phyto-guard CFU

Ingredients: coconut-based surfactant, castor oil, grain alcohol, oil of citrus reticulata, oleoresin of pinus palustris, oil of cymbopogon citratus, oil of caraphyllus, oil of pimpinella anisum, oil of cinnamomum camphora, oil of myrtaceae E. globulus

- All-natural plant protectant composed of many oils
- Can be helpful to deter insects and worm pests
- Contains secondary plant metabolites that plants themselves produce to arrest feeding by insects
- The dilution rate is 2.0-2.5%
- Small areas – apply 3 ounces Phyto-guard and 1.25 ounces Neem Oil to 1 gallon water
- Large areas – apply 1 gallon Phyto-guard and 50 ounces Neem Oil to 39 gallon water

Stock#05-2000-032 1 Quart \$24.95

Stock#05-2000-001 1 Gallon..... \$84.00

Potting Soil – Perennial Blend CFU

- A well-drained mix for starting perennials in containers and planting beds
- A blend fortified with organic compost
- Users add their own nutrients for their specific needs

Stock#05-1013-022 22 Quart Bag..... \$6.80

Potting Soil - Premium Lite Growing Mix CFU

- Contains both organic compost and a full supplement of organic nutrients
- For use by organic growers who need a lighter mix for germination, seed starting, and growing plants in flats

Stock#05-1018-120 1/20-Cubic Yard Bag.... \$11.50

Potting Soil – Premium Organic Potting Soil CFU

- Excellent for making soil blocks, potting seedlings, and transplanting
- Fortified with organic nutrients
- Has excellent moisture retention and drainage

Stock#05-1014-120 1/20-Cubic Yard Bag.... \$10.50

Premier CFU

Ingredients: calcium carbonate, potassium sulfate, seaweed, humic acid, organic apple cider vinegar, Vitamin C, Vitamin E, Vitamin B1

- Use in fruit or vegetable crops
- Designed to correct calcium and potassium deficiencies in vine crops and vegetables
- Invigorates crops by mineralizing and fertilizing
- Helps determine size, taste, shelf life, and quality of vine crops and vegetables
- Mix thoroughly before using, shaking vigorously
- Apply 2-4 ounces per 100 feet of drip line every week

Stock#05-2400-212 2.5 Gallons \$59.92



SeedGro CFU

Ingredients: phosphorus stabilized fish, sodium nitrate, organic molasses, humus, humic acid, fulvic acid, potassium sulfate, sea minerals, liquid seaweed, microbiological soil stimulant, photosynthetic microbes, hypercellulase, symbiont microbes, humic nutrients, beneficial cultures, Vitamin C, Vitamin E, Vitamin B1, *Beauveria bassiana*

- A multipurpose all-natural liquid fertilizer
- Contains biology made up of bacteria, enzymes, and amino acids
- Formulated to improve the biological life of the soil and supply plant-available nutrients
- Sparks germination and early growth
- Excellent to use as a supplement for growing fruits and vegetables
- In rainy seasons, use every week to improve the energy level of the soil
- Under normal conditions, use every two weeks during growing season
- Pre-plant: apply 1 gallon to 4 gallon water per 1000 square feet
- After planting: apply 1 pint to 2 gallon water per 200 feet of row with watering can
- Drip system: use 4 ounces per 100 feet of row per week during growing season

Stock#05-2011-001 1 Gallon \$7.74

Stock#05-2011-212 2.5 Gallons \$17.75

Stock#05-2011-015 15 Gallons \$103.50

Soft Rock Phosphate (Calphos) CFU

Ingredient: soft phosphate

- All-purpose garden mineral
- A natural, untreated soft phosphate clay
- Combines 74 essential minerals and amino acids
- 100% available for excellent root development and plant growth
- Stays attached to the soil structure
- A powerful tool to meet the nutrient needs of crops
- Can be used on gardens, flower beds, lawns, small fruits, and fruit trees

Stock#04-1051-050 50 Pounds \$10.61

SP-1 CFU

Ingredients: SP-1

- A compost tea that provides many nutrients
- Use as a soil drench for transplanting plants or bare rootstock
- Inoculates the roots with macro trace nutrients and biologicals
- Gives plants a major boost during transplant stress
- Organic growers should check with certifiers for approval prior to use
- Broadcast application: apply 2 to 12 gallons per acre
- In-furrow application: apply 1 gallon per acre
- Foliar application: apply 0.5 to 2 gallons per acre
- Seed piece or bulb: mix 1:1 with water and spray
- Root dip application: mix 1:1 with water and thoroughly soak roots prior to transplant
- Greenhouse: apply 16-32 ounces per 1000 square feet after emergence

Stock#05-2010-001	1 Gallon.....	\$8.84
Stock#05-2010-212	2.5 Gallons.....	\$19.55
Stock#05-2010-015	15 Gallons.....	\$106.69

Vinegar 200 (white) CFU

Ingredients: white vinegar, 20% acetic acid

- Can be used as a contact weed killer

Stock#08-1003-001	1 Gallon.....	\$8.59
Stock#08-1003-212	2.5 Gallons.....	\$19.96
Stock#08-1003-015	15 Gallons.....	\$115.00

Garden Seeds

Johnny's Selected Seeds are Available at Lancaster Ag
~Organic vegetable seeds for your garden~

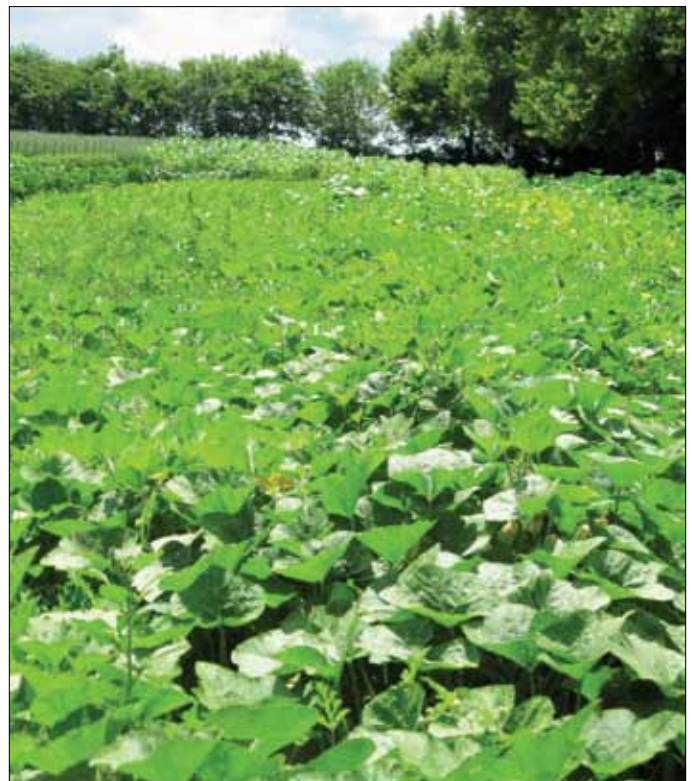
We at Lancaster Ag are stocking our Retail Store with a full line of organic garden seeds for this 2012 spring season. This is a service that we offer as a convenience to our local customers who stop by our North Ronks Road facility to pick up garden products. Instead of ordering organic seeds from a catalogue or online, customers can choose their seed packets in our store and avoid mailing costs.



Our selection includes varieties of beets, cabbage, soybeans, carrots, corn, cucumbers, greens, lettuce, cantaloupe, watermelon, onions, peas, radishes, spinach, zucchini, tomatoes, dill, parsley, lima beans, and green, yellow, and purple beans. Stop by our store and pick up organic seed packages early for the best selection.

Fall Garden Program

- **Obtain a Soil Sample**
Take a soil sample every two to three years.
- **Manage the Residue**
Chop or shred the plants immediately after harvest is complete.
- **Apply d-Compose**
Apply d-Compose at the rate of 1 quart d-Compose to 2 gallon water per 1000 square feet. Or d-Compose can be mixed with the quantity of water that is easiest for you to apply and distribute across your garden and residue.
- **Till the Soil**
Shallow incorporate the plant residue and d-Compose into the soil with your choice of tillage method. We recommend no more than 6-inch deep tillage.
- **Apply Fall Dry Blend**
Apply Blend C (calcium), Blend M (magnesium), or Blend P (phosphorus) according to Lancaster Ag's recommendation.
- **Seed Cover Crop**



Spring Garden Program

Ground Preparation

- Till the cover crop and let soil rest.
- Work garden into a finished seedbed

Pre-plant

- Apply SeedGro at the rate of 1 gallon per 1000 square feet.
- Apply Garden Top Dress at the rate of 25 pounds per 1000 square feet.
- Till soil lightly.

Side Dress

- Apply SeedGro at the rate of 1 pint SeedGro to 2 gallon water per 200 foot-row every 2 weeks during the growing season or as needed for energy or growth.

Foliar System

Alternate the following two products every 5-7 days during the growing season:

- 1.5 ounce Fruit Mix with 1 gallon water per 1000 square feet
- 1 pint F-1 with 1 gallon water per 1000 square feet

Note: If you are growing certified organic, please use all organic versions.

Fall Produce Program

Step 1 – Soil Sample

Obtain a soil test kit from your Lancaster Ag Representative. Take a soil sample between July and September following the kit instructions. We recommend soil sampling your soil every two or three years and that each following sample is taken during the same month of the year. Send your soil sample to your Lancaster Ag Representative for testing and yearly product recommendation.

Step 2 – Plant Residue

Chop or shred the plants immediately after harvest is complete.

Step 3 – d-Compose

Mix 4 gallons d-Compose with 20 gallons of water and apply to one acre of soil. Or d-Compose can be mixed with the quantity of water that is easiest for you to apply.

Step 4 - Tilling

Shallow incorporate the plant residue and d-Compose into the soil with your choice of tillage method. We recommend no more than 6-inch deep tillage.

Step 5 – Dry Blend

After tillage, broadcast apply the Dry Blend at the recommended rate per acre with your choice of spreading method. This application should be done between August and December or before the ground is frozen.

Step 6 – Cover Crop

Sow the cover crop seed using your choice of spreading method.



Spring and Summer Produce Program

A very basic ingredient in growing produce is water. It is the most important nutrient that you the grower can apply to your acres of produce. Water can play a key role in the success of your produce. Success or failure can depend on the lack or excess of water. If you miss with irrigation, it does not matter how many nutrients you have applied up front, your yield in the end will be affected.

Please review the following steps carefully. This is a handy guide to help you plan for a successful growing season in your produce fields.

Step 1 - Tilling

If you have followed the fall program, shallow till the soil of your field by your preferred method to prepare the soil for planting.

Step 2 – Pre-planting

- Spray apply SeedGro at the rate of 30 gallon SeedGro to 30 gallon water per acre.
- Caution: Till only as much as necessary.
- Apply Garden Top Dress at the rate of 1000 pounds per acre
or
- Apply Garden Top Dress at the rate of 5 pounds per 200-foot row after the seed is covered

Step 3 – Planting

When the soil is ready, plant your seeds. Apply Garden Top Dress to the soil surface if it was not applied before planting and lightly incorporate via cultivation. When it is time to plant your transplants, prepare a solution of SP-1 (soil drench) and water by mixing them in a 1:1 ratio. Place this solution in a small bucket and dip the entire root mass of transplants in this solution before placing them in the soil.

Step 4 – Tissue Sampling

The foliar feed and drip systems must be custom formulated according to the needs throughout the growing season via tissue samples taken every 2-3 weeks. Contact your Lancaster Ag Representative to have your leaf samples tested.

Step 5 - Observation

Thoroughly observe the plants in your produce acreage once a week. This will help you correct problems before they are out of control. Observe each type of plant for proper general appearance, structure, color, growth, and reproduction. Also observe your plants for insect problems. Many insect problems begin on the underside of the leaf surface.

Step 6 – Foliar Feeding

Alternate the following two products every 5-7 days during the growing season:

- 2 quart Fruit Mix with as much water as possible (20-50 gallons) per acre
- 4 gallon F-1 with as much water as possible per acre

Step 7 - Weed Control

Control weeds throughout the growing season with plenty of perseverance by the method of your choice.

Step 8 – Water Irrigation

Regulating your water irrigation continually throughout the growing season is of utmost importance. If your plants are dry or excessively wet, the results can be disastrous. Water is the most important nutrient that you can apply to your produce.

Step 9 – Drip Irrigation

- Apply 4 ounce SeedGro per 100 foot-row once a week
- Apply 2 ounce Premier per 100 foot-row once a week
- After fruit sets to the size of a marble or golf ball, apply Premier twice a week

Note: If you are growing certified organic, please use all organic versions.



Spring Greenhouse Crops

Biological = Fruit Mix Organic = SeedGro & Premier

Pre-planting System

- Broadcast SeedGro at the rate of 1 gallon SeedGro to 5 gallon water per 1000 square feet
- Broadcast 25 pounds Top Dress per 1000 square feet

Foliar System

Alternate the following two products every 5-7 days during the growing season:

- 1.5 ounce Fruit Mix with 1 gallon water per 1000 square feet
- 1 pint F-1 with 1 gallon water per 1000 square feet

Drip Irrigation

- Apply 4 ounce SeedGro per 100 foot-row once a week
- Apply 2 ounce Premier per 100 foot-row once a week
- After fruit sets to the size of a marble or golf ball, apply Premier twice a week

Spring Sweet Corn Program

Pre-planting System

- Broadcast 500 pounds Corn Row Starter. This amount varies depending on the amount of manure and Fall Blend that was previously applied and whether there was a cover crop.
- Spray broadcast Force at the rate of 10 gallon Force to 20-30 gallon water per acre pre-plant.

Foliar System

- Spray Force at the rate of 5 gallon Force per acre every two weeks during the growing season.



Field Tomatoes, Produce, & Vine Crops

Biological = Force & Fruit Mix
Organic = SeedGro & Premier

Pre-planting System

- Apply 750 pounds Top Dress per acre
- Apply Force or SeedGro at the rate of 30 gallon Force to 30-40 gallon water per acre



Drip Irrigation

- Apply 4 ounce Force or SeedGro per 100 foot-row once a week
- Apply 2 ounce Premier per 100 foot-row once a week
- After fruit sets to the size of a marble or golf ball, apply Force or Premier twice a week

Foliar System

Alternate the following two products every 5-7 days during the growing season:

- Apply Fruit Mix at the rate of 2 quart Fruit Mix to 15 gallon water per acre
- Apply F-1 at the rate of 5 gallon F-1 to 20 gallon water per acre

Residue Management

• Chop the Plant Residue

Chop or shred the plants immediately after harvest is complete.

• Apply d-Compose

Apply d-Compose at the rate of 1 quart d-Compose to 2 gallon water per 1000 square feet or 4 gallon d-Compose to 20 gallon water per acre. Or d-Compose can be mixed with the quantity of water that is easiest for you to apply and distribute across your garden and residue.

• Till the Soil

Shallow incorporate the plant residue and d-Compose into the soil with your choice of tillage method. We recommend no more than 6-inch deep tillage.

• Seed Cover Crop

Program for Grapes

1. Apply a Fall Blend according to Lancaster Ag's recommendation, which is based on the analysis of your soil test. For best results, apply before the end of December.
2. In early spring (April) apply 2.5 pounds Garden Top Dress per 100 square feet on the soil under the branch area of your grapevine. Suggestion is 3-foot band the width and length of the branch area.
3. Monthly during the growing season, mix 2 pint SeedGro with 2 gallon water per 200 foot-row and apply on the soil with a watering can under the branch area.
4. Each week mix 1.5 ounce Fruit Mix with 2.5 gallon water. Apply as a light mix.
5. Mix 5 ounce F-1 with 1 gallon water and apply thoroughly to the grape plant as a light mist.
6. Throughout summer and fall, make sure grapes have sufficient water. Grapes begin preparing for next year's crop by replenishing root reserves after harvest ends this year.

Tip: Foliar applications are best in very early morning or late in the evening.

Program for Fruit Trees

1. Apply a Fall Blend according to Lancaster Ag's recommendation, which is based on the analysis of your soil test. For best results, apply immediately following harvest. For those with 24+ trees, call Lancaster Ag for a custom recommendation.
2. When trees are dormant, spray with lime sulfur.
3. Also, when trees are still dormant or have up to 1/2" green growth and temperature is above 40 degrees, apply a dormant oil of choice.
4. Mix 1 gallon SeedGro with 2 gallon water per 1000 square feet and apply one time on the ground in the branch area of your trees.
5. **Monthly** from April to August, apply 2 pounds Garden Top Dress on the ground in the branch area of your trees. The rate can be increased to boost energy levels in poor or wet soils.
6. From spring green-up till 2 weeks after harvest, mix 1.5 ounce Fruit Mix with 2.5 gallon water per 1000 square feet or mix 2 quart Fruit Mix with 2000 gallon water per acre and apply as a light mist every 5-7 days.
7. Mix 5 ounces F-1 with 1 gallon water and apply thoroughly to the trees as a light mist every 5-7 days.

Tip: Foliar applications are best in very early morning or late in the evening.

Note: If you are growing certified organic, please use all organic versions.

